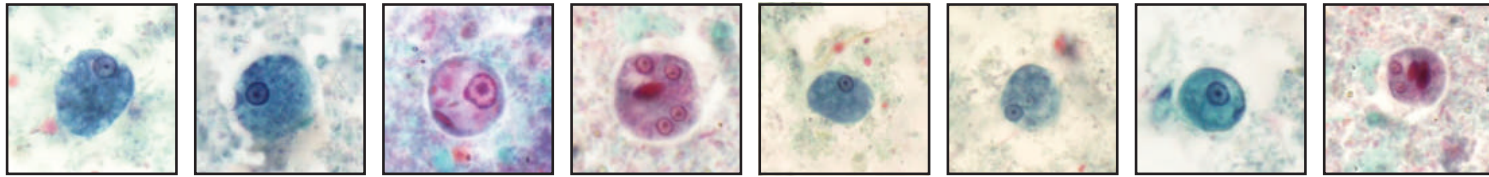
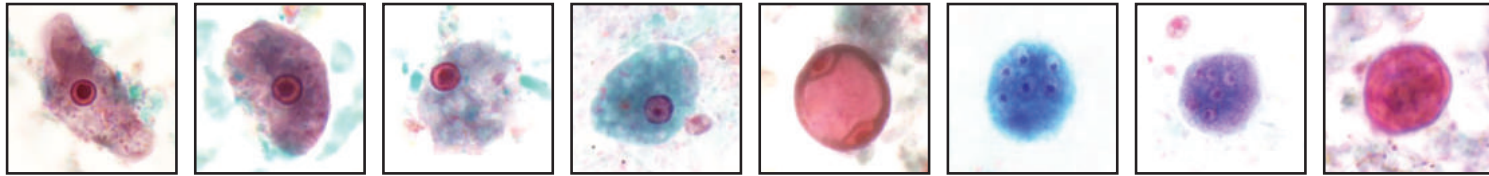


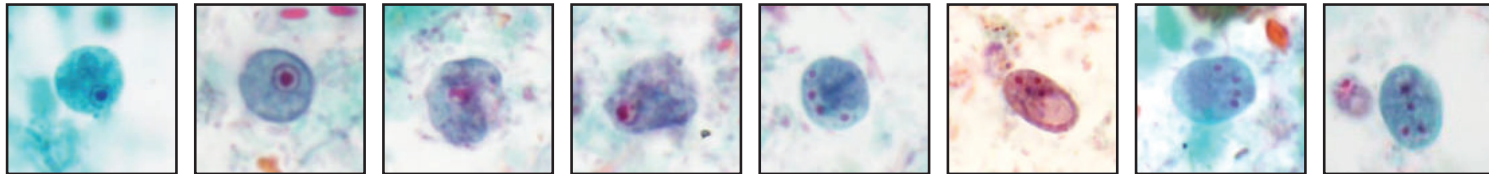
# All Specimens preserved in TOTAL-FIX<sup>®</sup>



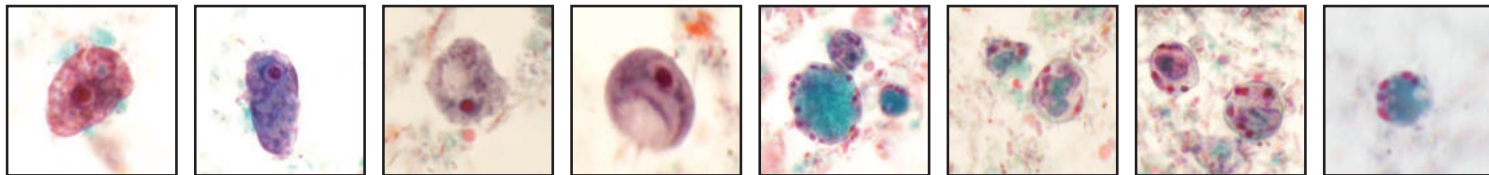
Row 1: 1-4 *Entamoeba histolytica*/*E. dispar*; 5-8 *Entamoeba hartmanni*



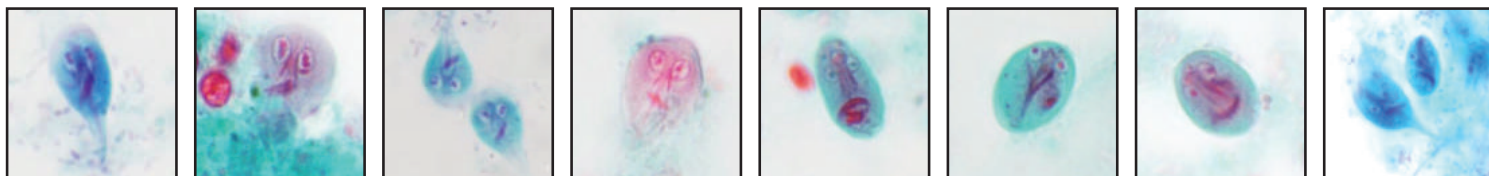
Row 2: 1-8 *Entamoeba coli*



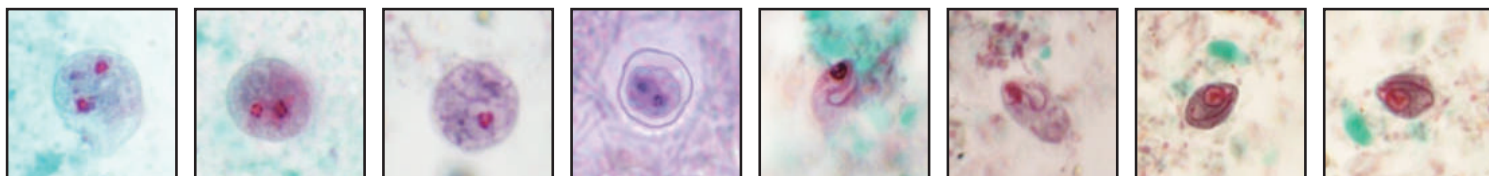
Row 3: 1-8 *Endolimax nana*



Row 4: 1-4 *Iodamoeba bütschlii*; 5-8 *Blastocystis* spp.



Row 5: 1-8 *Giardia lamblia* (*G. duodenalis*, *G. intestinalis*)



Row 6: 1-4 *Dientamoeba fragilis*, note the newly discovered cyst (#4); 5-8 *Chilomastix mesnili*

All specimens preserved in (MCC) Medical Chemical Corporation's patented stool fixative... TOTAL-FIX<sup>®</sup>.

TOTAL-FIX<sup>®</sup> contains no mercury, no formalin, no PVA. All specimens stained with MCC's Wheatley's Trichrome stain.



**MEDICAL CHEMICAL CORPORATION VISIT OUR WEBSITE AT [www.MED-CHEM.COM](http://www.MED-CHEM.COM)**  
19430 Van Ness Ave • Torrance, CA 90501 - Tel (800) 424-9394 • Fax (310) 787-4464

SINCE 1954